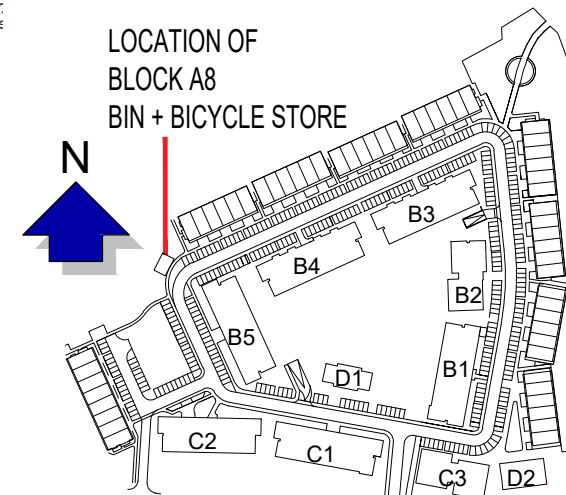
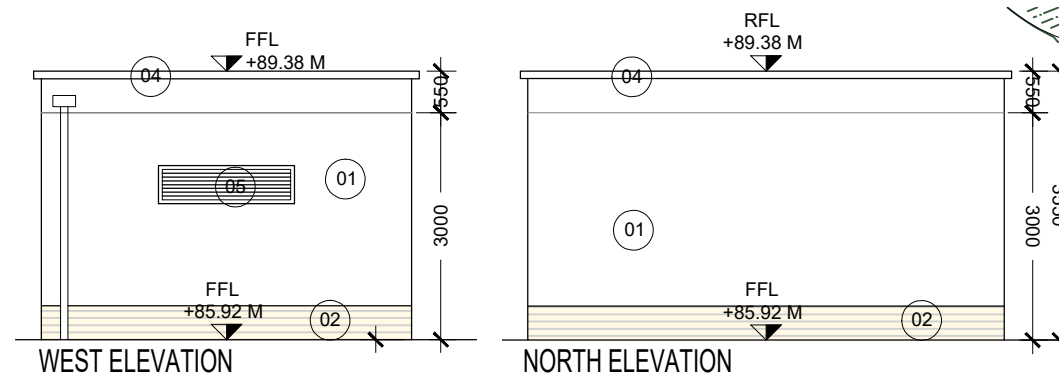
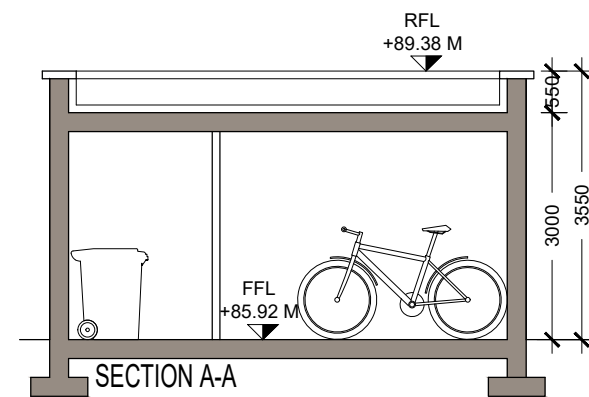
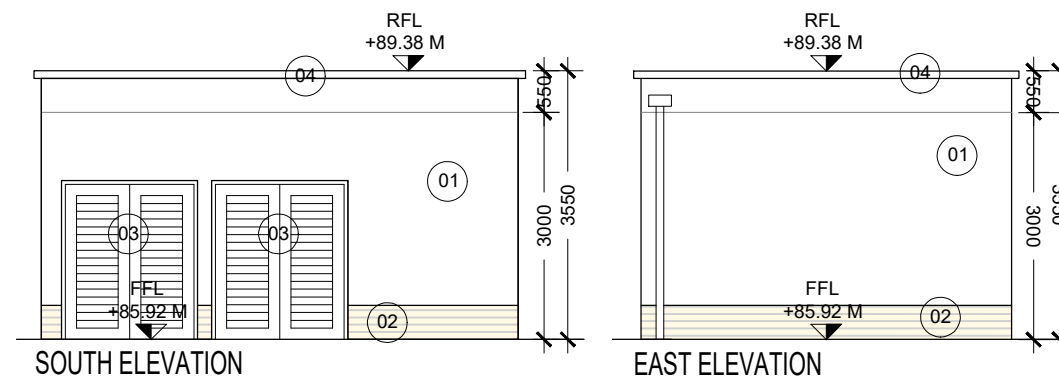
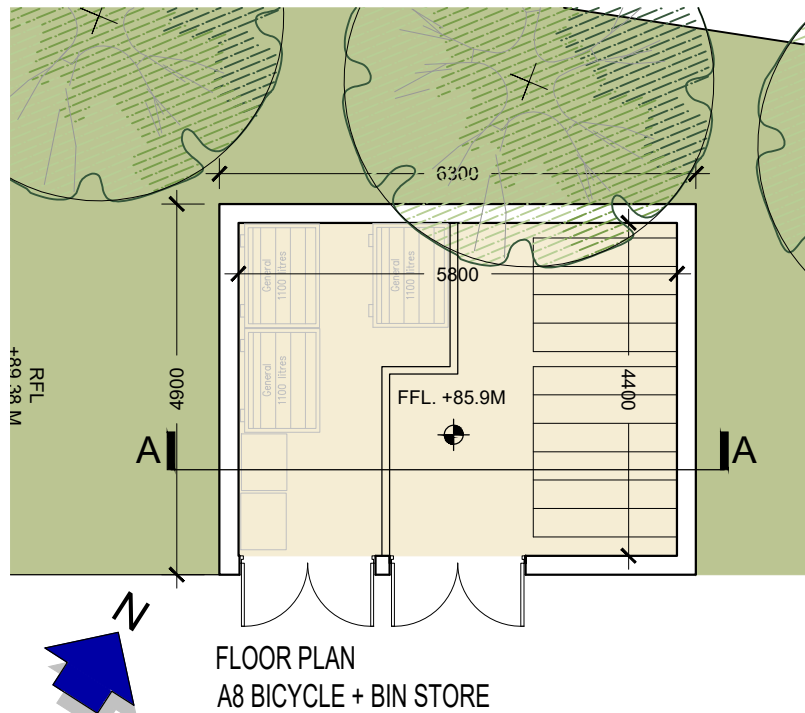
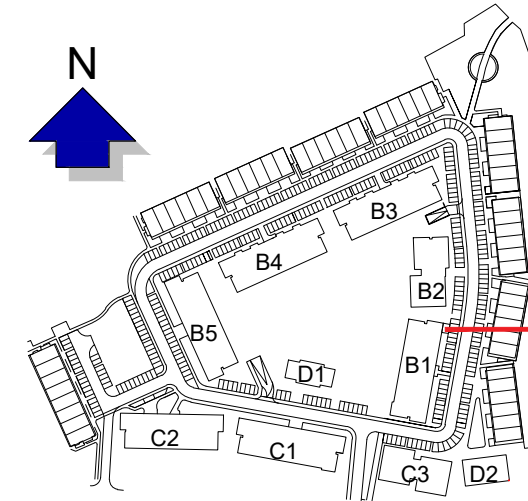
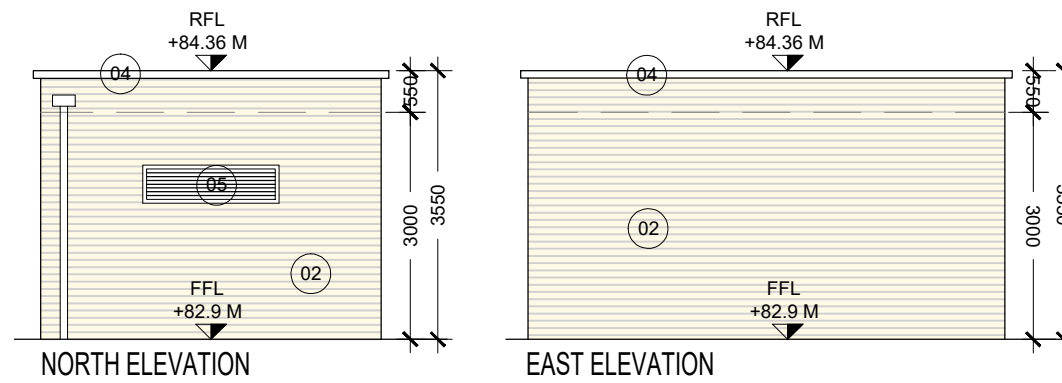
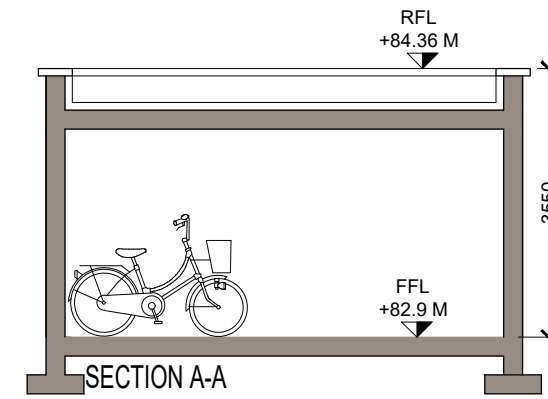
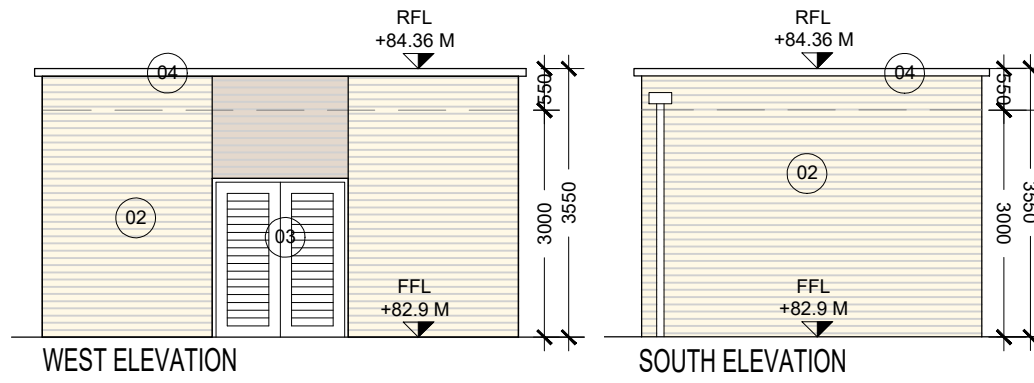


Materials Legend

- 01 - Render to selected colour
- 02 - Brick to selected colour
- 03 - Hardwood Timber vented door to selected colour
- 04 - Concrete capping
- 05 - Vent



- GENERAL NOTES**
1. COPYRIGHT RESERVED.
 2. DO NOT SCALE DRAWING. USE FIGURED DIMENSIONS ONLY.
 3. ALL DISCREPANCIES TO BE REPORTED TO ARCHITECT.
 4. THE CONTRACTOR IS RESPONSIBLE FOR CHECKING ALL LEVELS AND DIMENSIONS.
 5. ALL STRUCTURE TO BE TO STRUCTURAL ENGINEERS DETAILS.
 6. ALL MECH & ELEC SERVICES TO SERVICES ENGINEERS DETAILS.
 7. ALL PROPRIETARY ITEMS TO BE INSTALLED IN ACCORDANCE WITH MANUFACTURERS INSTRUCTIONS.
 8. CONTRACTOR IS RESPONSIBLE FOR THE COORDINATION OF STRUCTURE FINISHES AND SERVICES.

REV	DATE	DESCRIPTION	BY

JOHN FLEMING ARCHITECTS
 103 LEESON STREET UPPER, DUBLIN 4.
 T: (01) 6689888 E: info@jfa.ie W: www.jfa.ie

CLIENT
Ardstone Homes Ltd

PROJECT
Residential Development
at Scholarstown Road

DRAWING
Bin and Bike Store drawings
Located beside Block B1 + A8

SCALE 1 : 100 @ A3 JOB NO. 1823

DRAWN BY NK

DATE November 2019

DRAWING NUMBER P-PL-EL-BS-01 REVISION -

DRAWING LOCATION w:\18.pln\18230.planning\11_planning_application\112.rvt

DRAWING STATUS
PLANNING